

# Mw=7.05 - Kepulauan\_Mentawai\_region,\_Indonesia cmt:

USGS W-phase Moment Tensor

cmt: *usp000fn3d.wmt*

070913\_033528\_fn3dB

Long. Lat. Depth : 99.627 -2.13 17.0

Azi. Dip Rake : 132 80 90

Hmin, Hmax: 7.606 7.606 , 26.394 km

slip= 1.279 m

Vecteurs horizontaux et  
Amplitude deformation verticale = contours

Composante verticale:

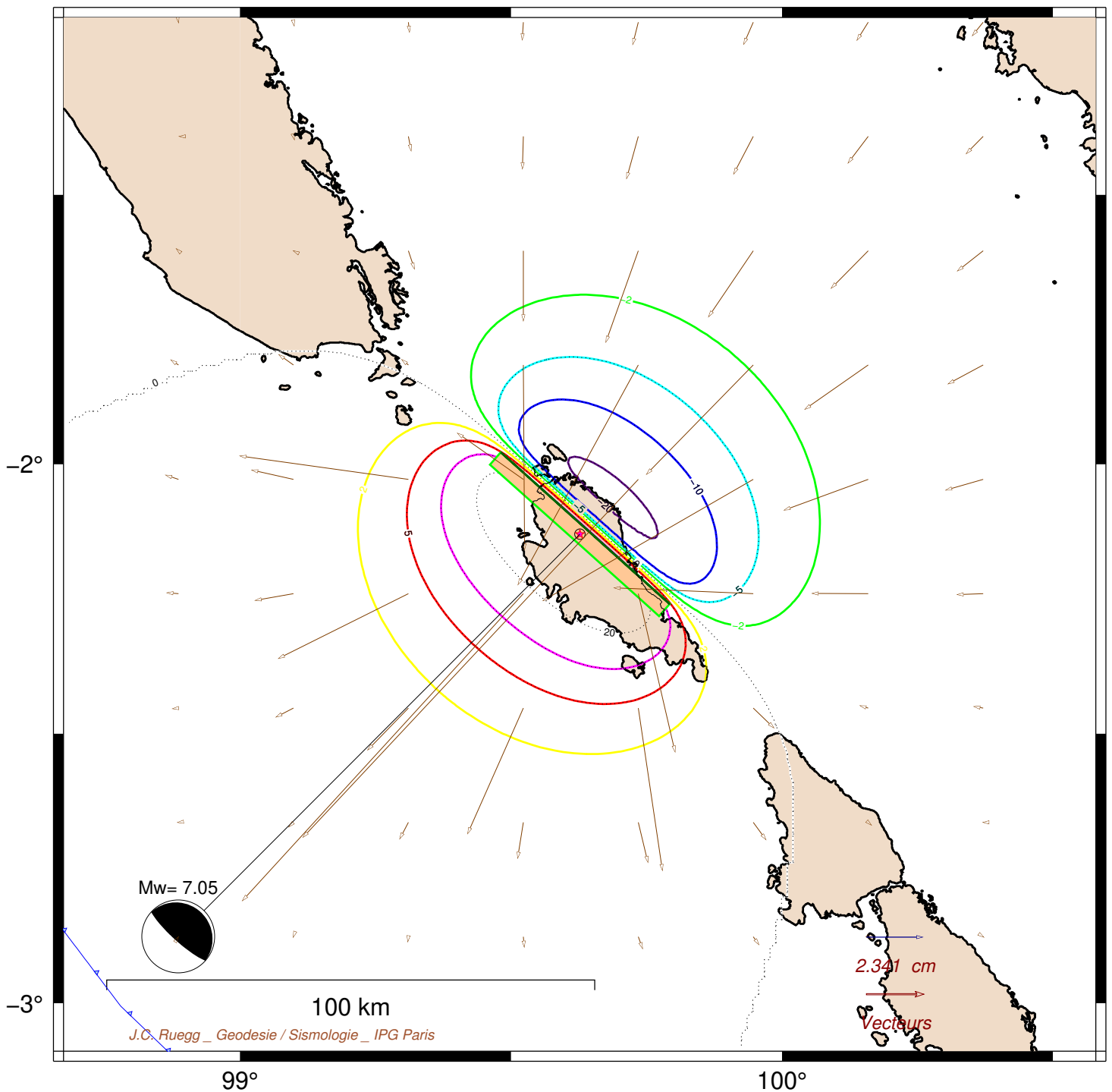
dU min, max: -21.82 , 35.08 cm

Amplitude vecteurs:

dV min, max: 0 , 20.11 cm

**Mw= 7.05**

- plan nodal : B



/home/ruegg/CMT/FINAL\_prg/GMT\_JB10.cpt

prog: gmt\_TTT5\_x.bat

FOND: G240/220/200