

# Estimation of water loss in the Caspian Sea using gravimetry and altimetry data

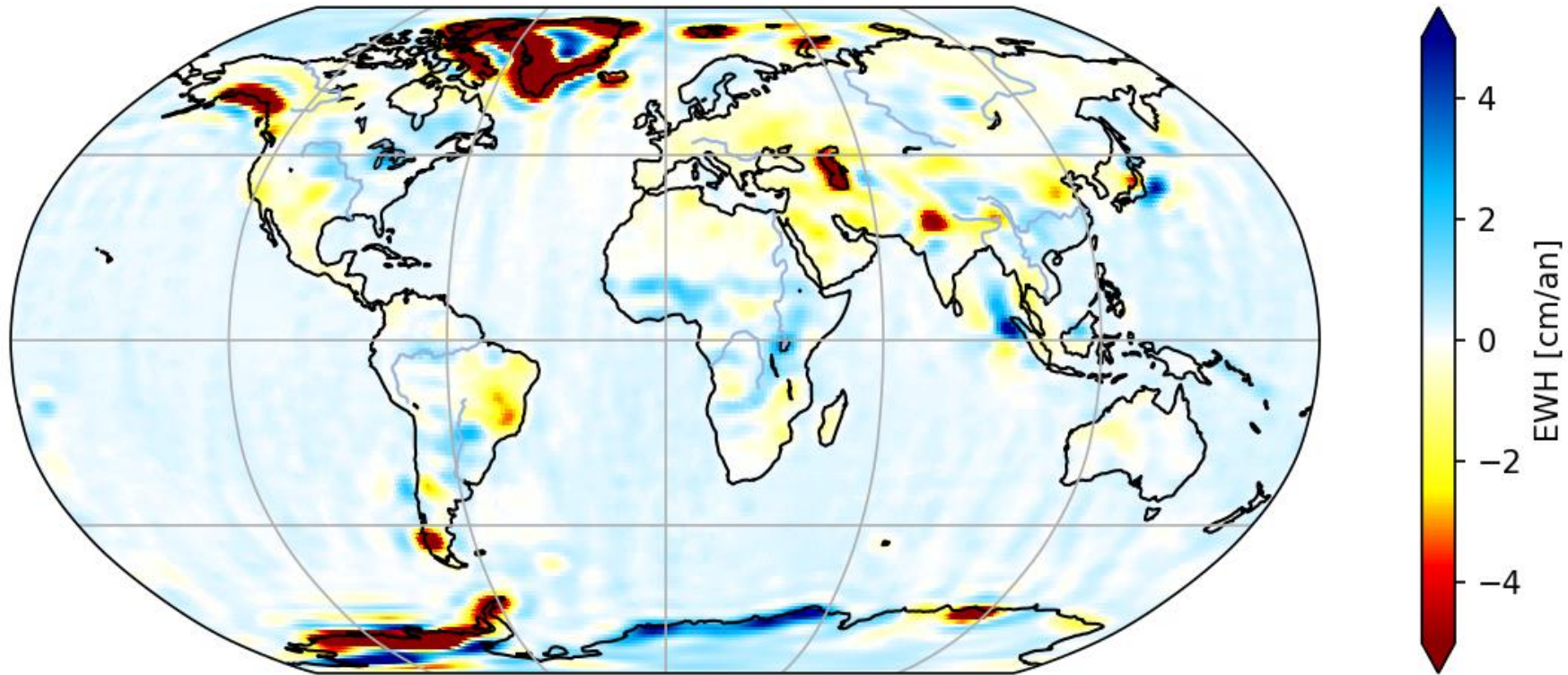


Fig 1 - Linear trend of the gravity field expressed in Equivalent Water Height (EWH) between 2003/01 and 2021/01

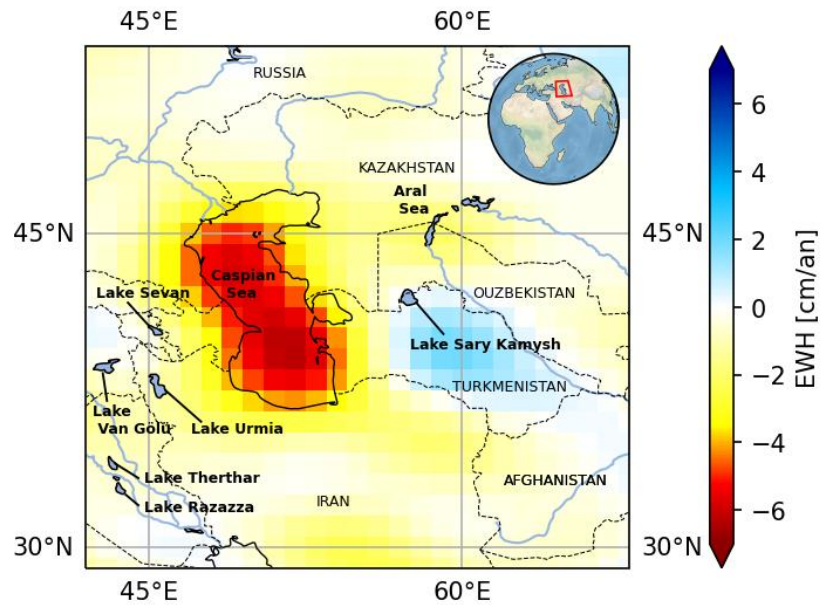


Fig 2 – Linear trend of the gravity field in the area of the Caspian Sea

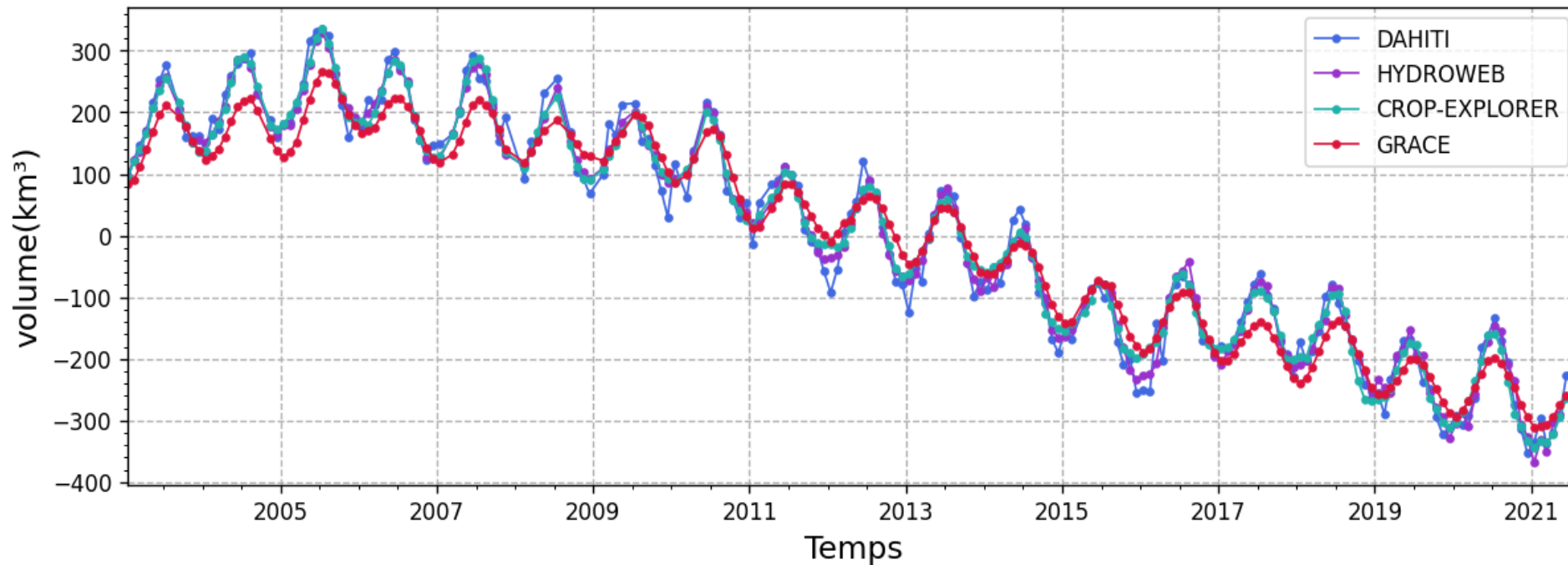


Fig 3 – Volume variations of the Caspian Sea computed from altimetry vs GRACE data